

Terra Imaging

Your partner for digital geospatial data

Since 1994 TerraImaging is modelling and visualising the earth's surface in three dimensions using remote sensing technologies. To put it simply, we supply quality data and products based on advanced technologies such as airborne Lidar or advanced digital cameras to customers that require accurate, detailed geospatial information.

A core focus at TerraImaging is the combination of data acquisition operations with value-added data processing, analysis and interpretation. Our services and products span a broad range from the data collection to highly specialised, custom-tailored end products, based on innovative classification methods and fully integrated into the client's GIS applications. One of our strengths is providing clients with exactly the right combination of data acquisition expertise, enhanced data processing, analysis capabilities and value-added mapping products to meet their unique needs. Our data products are used in various fields, including water management, coastal zone protection, city planning, infrastructure mapping, 3D-modeling, telecommunications, electrical and power utilities, urban noise protection and forestry.

TerraImaging has been involved with advanced remote sensing technologies since 1994. Our project partners include public sector agencies such as state mapping and surveying organisations as well as private sector clients in various areas. We operate in cooperation with international partners in Europe, Australia, North America and Southeast Asia. With offices in the Netherlands, Germany and France, TerraImaging offers worldwide services for our clients.

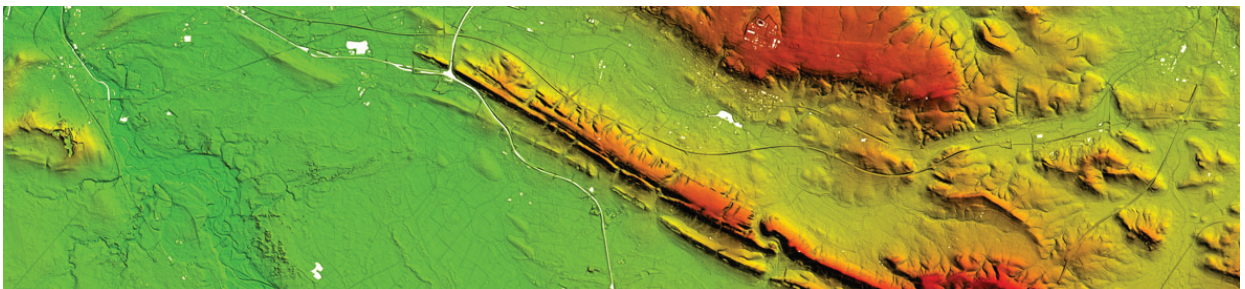
Highlights from our 17 years of laser scanning and digital camera experience include the production of countrywide digital terrain models for the Netherlands (AHN and AHN2) and Belgium, mapping European rivers for flood protection, including the River Loire (France) and the river Elbe (Germany).

We also monitor beach erosion in various countries, detect and map changes in cities, analyse solar potential and have produced very detailed 3D information products for highway engineering and maintenance and digital ortho mosaics of major cities in Europe.

Since the beginning, we have worked with all major Lidar systems on the market to generate our basic product; the earth as represented by a point cloud and differentiated into ground and vegetation layers. However, we also go beyond this common data product by adding integrated digital image capture capabilities to our sensor. We use sophisticated software tools developed in-house to improve automated classification routines and generate more robust classifications of the type and properties of the objects registered by the laser scanner. Using object-oriented approaches, vegetation, buildings, water and infrastructure can be distinguished more rapidly and accurately, expanding laser scanning's capabilities to be more than just a tool for capturing accurate elevation models.

Since 1999 we have been working with digital cameras, both frame cameras like Rollei, DMC and UltraCam and three line scanners like ADS40 and HRSC. Our own range of software tools allows us to produce ortho image mosaics at all resolutions quickly and cost-effectively, exploiting all advantages of the digital era.

In the past 17 years, we've processed huge amounts of data, routinely turned that data into information products and then delivered those information products to our customers, on time and within budget. We invite you to learn more about our products and services and contact us to see how we can help you with your next mapping project.



TerraImaging B.V.
Groenewoudsedijk 40
3528 BK Utrecht
The Netherlands
tel +31 (0) 30 686 61 60
fax +31 (0) 30 686 61 66
e-mail info@terraimaging.nl
www.terraimaging.nl

TerraImaging B.V. Berlin
Köpenicker Str. 10a
10997 Berlin
Germany
tel +49 (0) 30 53 21 77 20
fax +49 (0) 30 53 21 77 26
e-mail info@terraimaging.de
www.terraimaging.de

TerraImaging B.V. Paris
99 bis avenue du Général Leclerc
Paris 75014
France
tel +31 (0) 30 686 61 60
fax +31 (0) 30 686 61 66
e-mail info@terraimaging.fr
www.terraimaging.fr